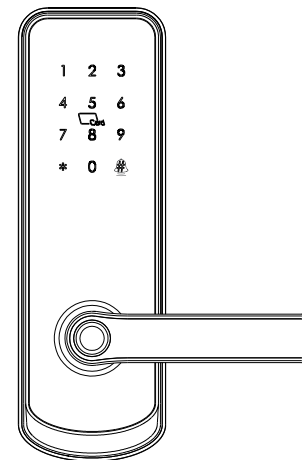


User Manual-Smart Digital Lock

NX1 TTLOCK VERSION



Scan the QR code below to download the APP



Search Google Play or APPLE Store with TTLOCK



IC Card



Passcode



Key



APP



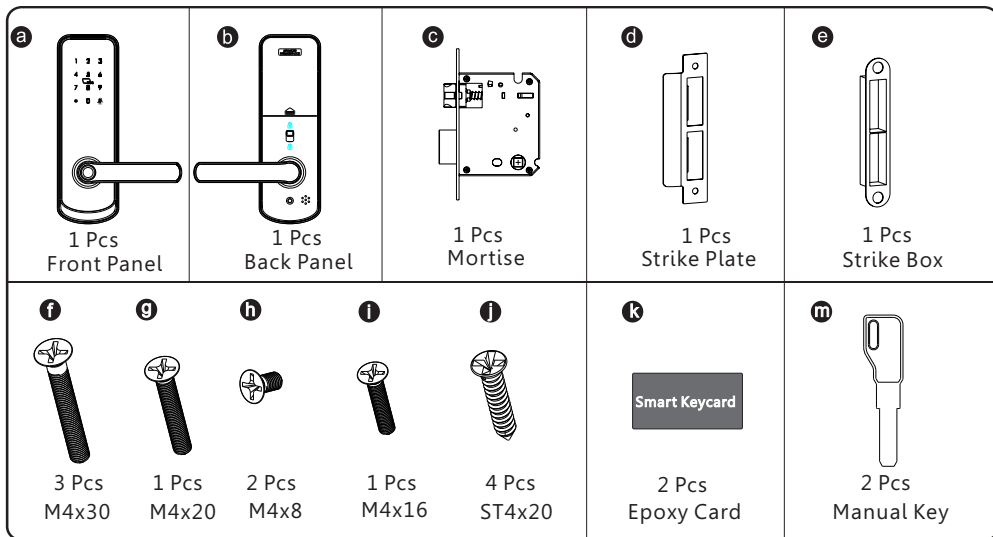
Fingerprint

Smart your life!

Version 1.2 Edition 2020

1 PACKING ACCESSORIES

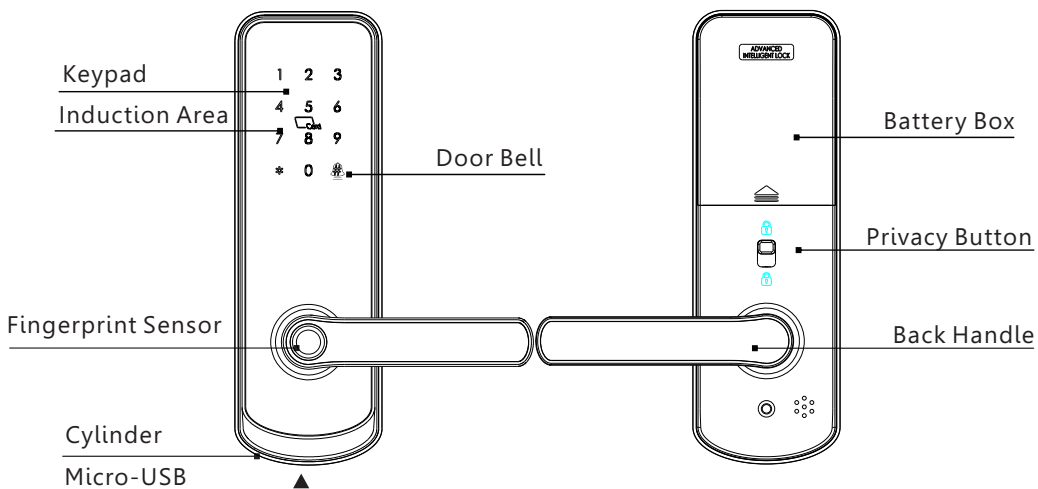
Please check the packing box and accessories when you got the lock in hand.



2 PRODUCT SPECIFICATION

Front Panel

Back Panel



TO OPEN/CLOSE & BELL FUNCTION

Enter the valid password or touch the IC card or press the finger to open the door.

Bell function: You can press the button "#" to ring the bell under normal using condition.

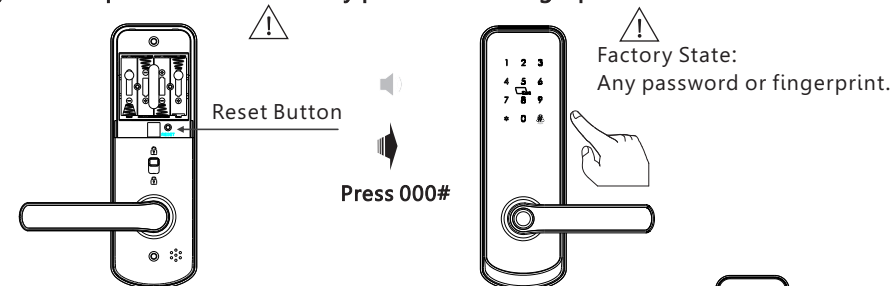
3 SYSTEM INTRODUCTION

Material	Aluminum Alloy,ABS,Arcylic
Color	Black/Satin Nickel
Door Thickness	35-55mm
Communication	Bluetooth
Support OS	iOS 7.0 or above, Android 4.4 or above
Battery Life	7000 times normal unlock(10-12 months)
Power Supply	DC6V:4pcs AA alkaline batteries
Static Current	≤50uA
Dynamic Current	<200mA
Unlock Way	Fingerprint,IC Card,passcode,APP,mechanical key
Unlock Time	1~1.5 seconds
Working Temperature	-20~50 degree
Working Humidity	10%~95%
Factory Password	Factory password:123456,after configuration,it will be invalid
Available Mortise	Support 60#Single latch, 6050/5572/4585/6085/7085/KS mortise
Virtual Password	Available
User Capacity	Card:200 group/password:150 groups/Fingerprint: 100 groups, one admin

4 RESET TO FACTORY STATE

Attention

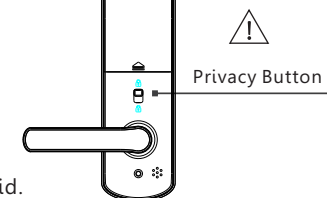
There is one Reset button on the back of rear panel.you can press this button for 3 seconds with sound tip,"please input initialization passcode,"enter: 000#, with sound: "Successful". Then the lock is under factory state, the default master password is: 123456 you can open the door with any password or fingerprint.



DEAD LOCK FUNCTION

Attention

There is one privacy button on the back panel. You can pull upward this button with sound tip "Locked", then the lock is dead locked inside, only the administrator can access the door, other user password or card will be invalid. And you can pull downward the button one more time with sound tip "Unlocked" to cancel this function.



5 INFORMATION AND SAFETY WARNINGS:

5.1 Introduction

This user manual will guide you through the functions and usages of our A260 smart lock. It is important that you follow the instructions and regard all notes that appear throughout this manual. Consult this manual before you attempt to use this lock. If you have any questions that not answered by this manual or on need of non-routine service, please call our customer service hotline or send FAQ to us.

5.2 Safety Warnings:

⚠ When reading this manual, note these icons: notes with the icon Must be read, understood and obeyed to prevent injury or damage to the lock.

⚠ General Usage

- This lock shall only be used as described in this manual.
- Verify that all parts of the lock are accounted for. If any parts are missing, please contact our service person.
- There is protective film on the front touch panel, if there are some scratches on the film, please remove the film if you need.
- Please use 4pcs AA batteries. Do not mix old and new batteries or other Zn/Mn batteries. Never insert objects into the lock other than batteries as described in this manual.
- Verify all surfaces are flat and level before beginning installation, installation on doors or surface with any types of deformity such as gaps or warping may cause the lock to malfunction or fail to operate entirely.
- Never apply any cleaner directly to any part of this lock. Only use clean water or mild cleaner on a soft non-abrasive cloth when cleaning.
- The lock must be used with Tuyasmart APP. The lock will function without the APP but full functionality may only be achieved when the APP is on use.

5.3 SALES AND SERVICE TERMS

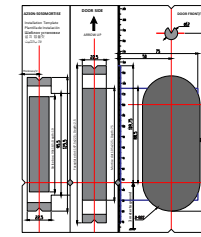
- Please read the manual carefully before use!
Limited 1-year Electronic Warranty Limited Lifetime Mechanical and Finish Warranty
- This A260 product comes with a 1-year Limited Warranty on Electronic Parts and a Limited lifetime. Mechanical and Finish Warranty against defects in materials and workmanship under normal use to the original residential user. Proof of purchase and ownership is required for the warranty to be in effect.
- Any error or question in our manual or sales term, please feel free to contact with us.
- For any wrong operation or installation to the user, we do not responsible for the duty.
- For the damage caused by anthropic factor or inevitable reason, we do not pay for the loss or maintain for free, please check our after sale service terms.
- Please do not take apart the lock if you are not technician, if necessary, please make the operations under the guide of technician.
- Notice: there maybe a little difference for product pictures with real product, please subject to our real products.
- After changing the battery, please do not throw away the battery, kindly refund to recycle bin in case of pollution!

6 PREPARING TO INSTALL

6.1 Line Drawing

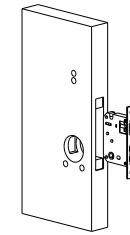
Draw a horizontal center line inside and outside the door at 1 meter from the ground. Fold the hole template, make the handle center line align at the door horizontal center line, then draw out the hole lines at front and side.

Drawing Center Line



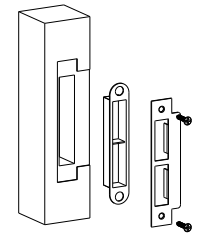
Drill Hole with Template

Step 1



Test with Mortise

Step 2



Drill hole for Strike Plate

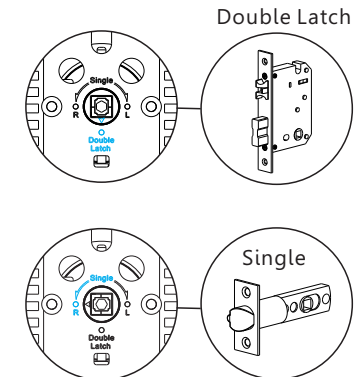
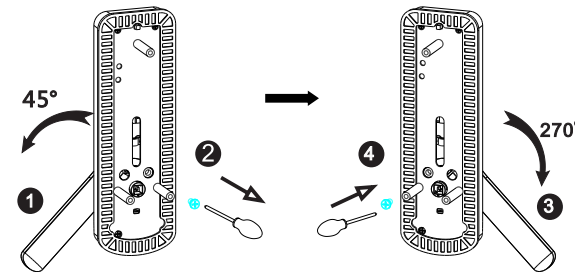
Step 3

6.2 Adjust Direction

1. Adjust to Left from Right Direction (Front Panel)

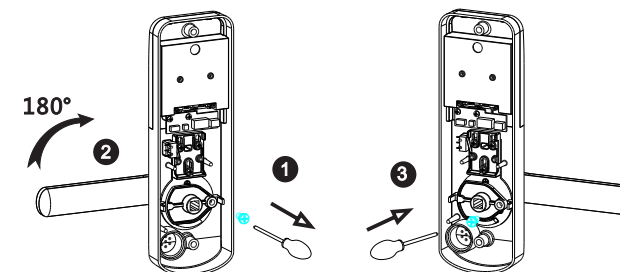
- 1.1 Turn the handle to 45 degree.
- 1.2 Use the allen key to take off the screw in the photo.
- 1.3 Turn the handle to 270 degree counterclockwise.
- 1.4 Tighten the screw in another side.

⚠ Make sure the arrow point to the right position according to the different mortise.



2. Adjust to Left from Right Direction (Back Panel)

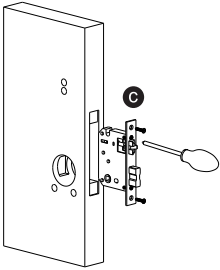
- 2.1 Use the allen key to take off the screw in the photo.
- 2.2 Turn the handle 180 degree counterclockwise.
- 2.3 Tighten the screw in another side.



7 INSTALL THE LOCK

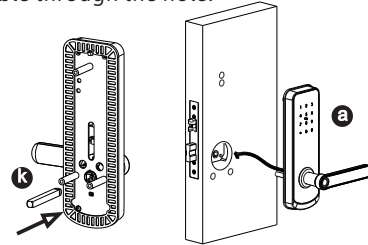
7.1 Assemble the Mortise

Assemble the mortise(c) into the slot which is drilled according to the template.



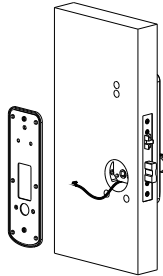
7.2 Assemble the Front Panel

7.2.1 Press hard the spindle into the handle hole
7.2.2 Fix the front panel(a) on the door and cross the cable through the hole.



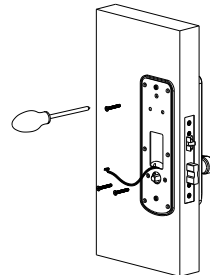
7.3 Assemble Gasket

Cross the cable through the gasket(inside).



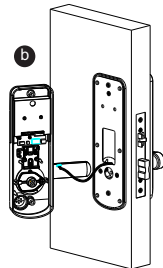
7.4 Fix the Front Panel

Tight the gasket with front panel with the three long screws.



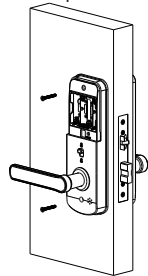
7.5 Assemble the Back Panel

Connect the cable with the connector on the PCB board



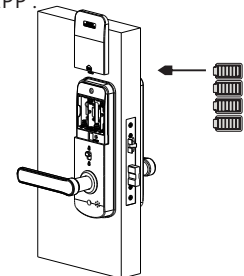
7.6 Fix the Back Panel

Fix the back panel with the screws.



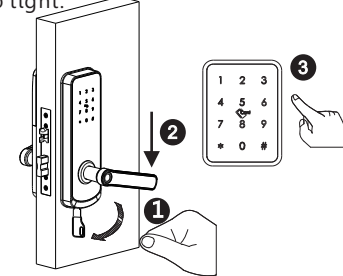
7.7 Assemble the Battery

Put 4pcs AA alkaline batteries into the battery box and test with factory passcode or APP.



7.8 Adjust the Lock Panel

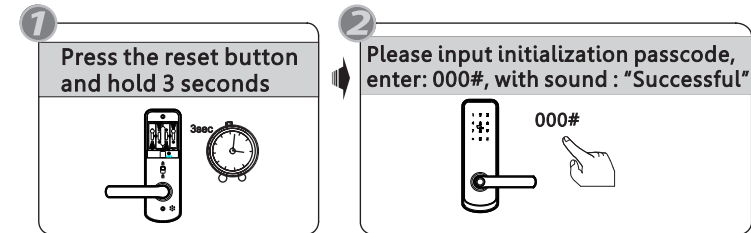
After finishing installation, please adjust the position of the lock panel or the screws whether it is too tight.



OPERATION STEPS

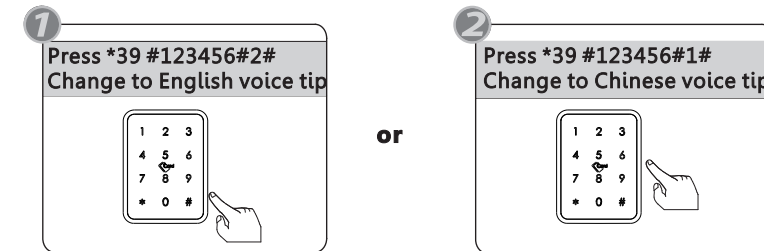
Please enroll the administrator before you start to use this lock. you can follow the operation steps as below:

1.Initialization



2.Change Language

Factory state: Default master passcode is:123456.

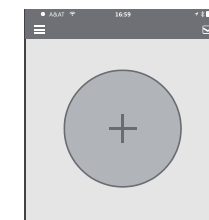
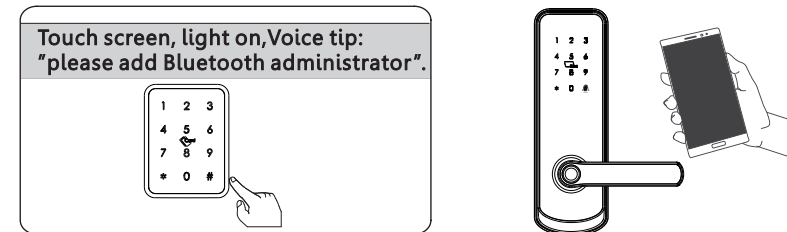


2.Enroll Mobile Administrator

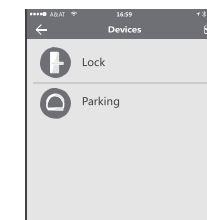
2.1 Factory state: press *12#123456#new passcode#new passcode#.

2.2 You can use the mobile APP to add the Bluetooth administrator.

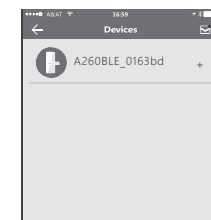
When adding the door locks, operations must be completed near the lock.



Step 1: Click "+" button



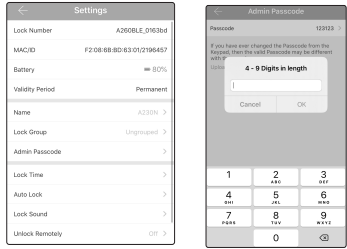
Step 2: Select the lock



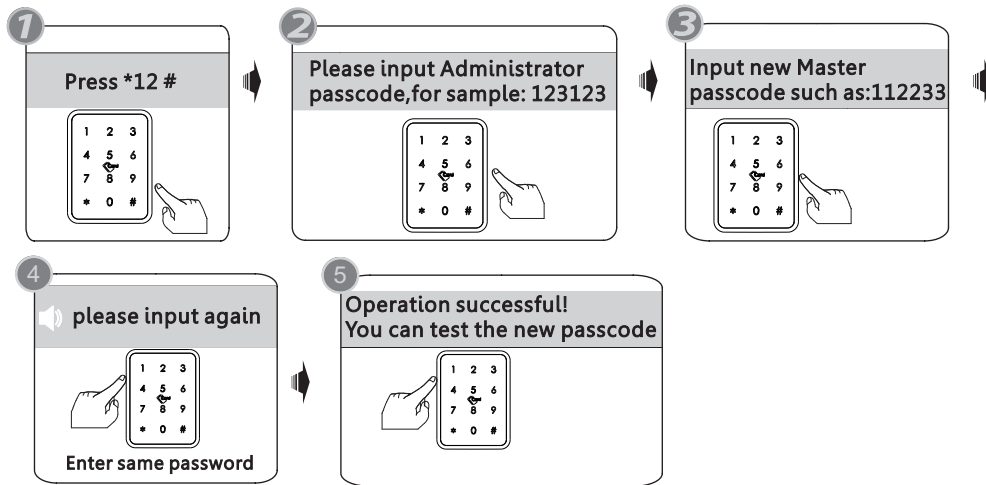
Step 3: Click the device name

3.Change Master Passcode

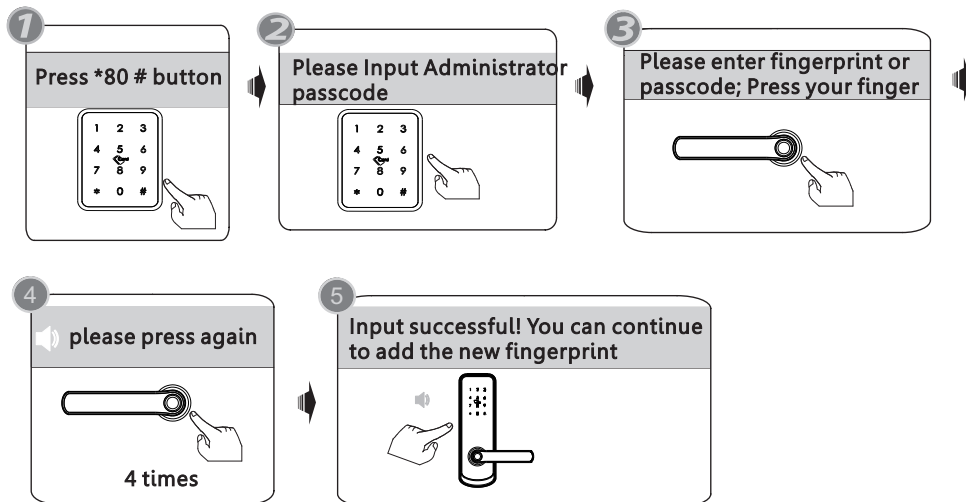
you can find the new master passcode in the mobile APP under "Settings".also you can edit the master passcode on App directly and upload Admin passcode to the lock like the below photo.



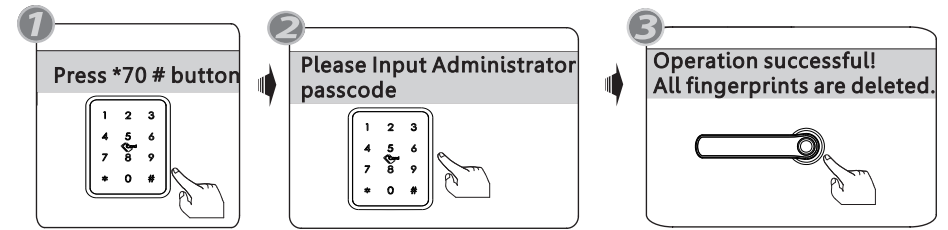
you can also change the master passcode on the lock directly. Please find the operation steps below:



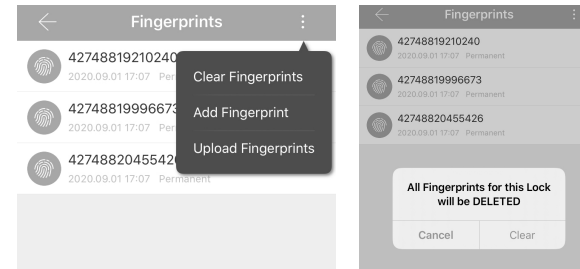
4.Enroll User Fingerprint



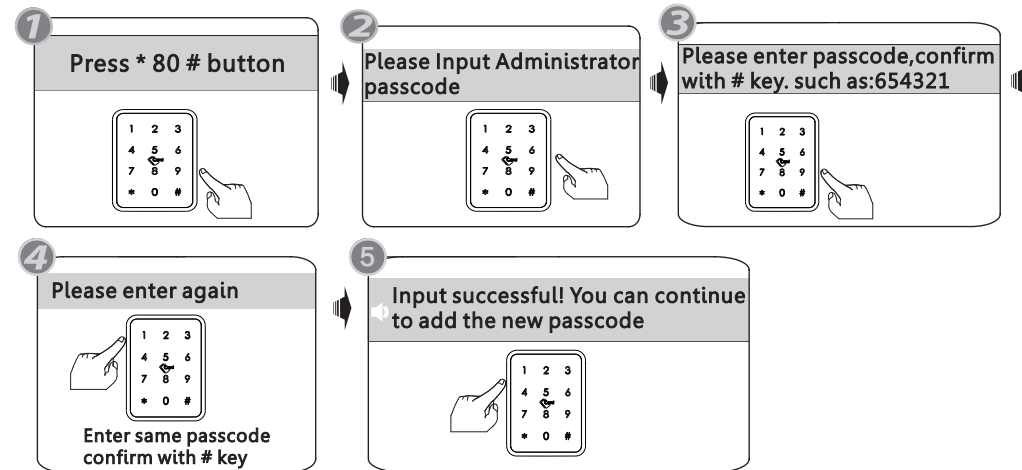
5.Delete User Fingerprint



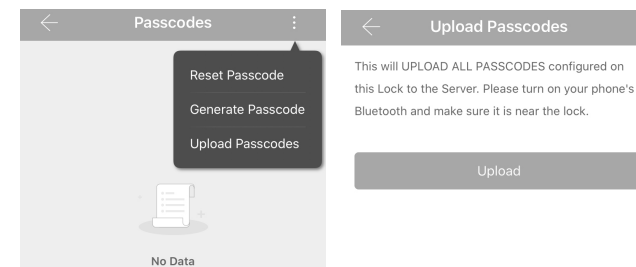
APP operation: you can deleted the added fingerprints one the lock and server.



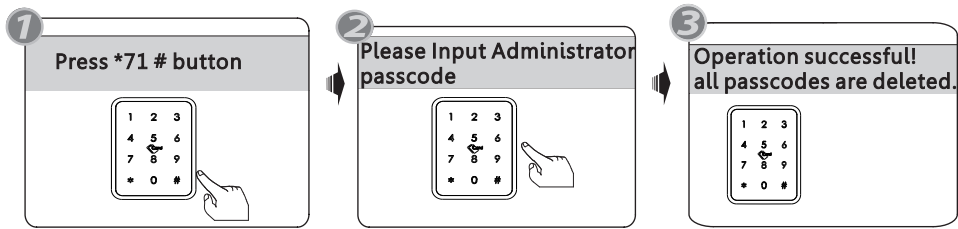
6.Enroll User Passcode



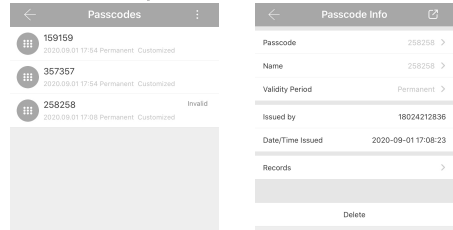
Under the mobile APP, you can upload the added passcodes to the lock and server.



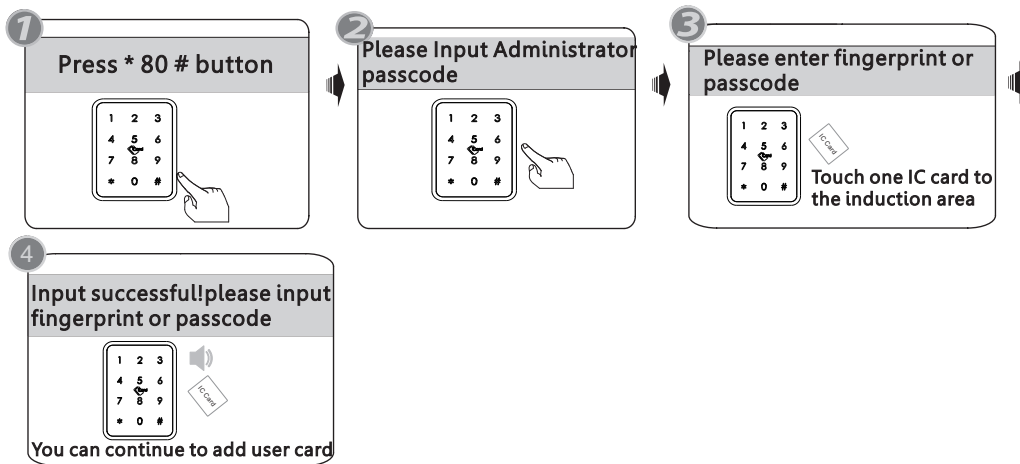
7.Delete User Passcode



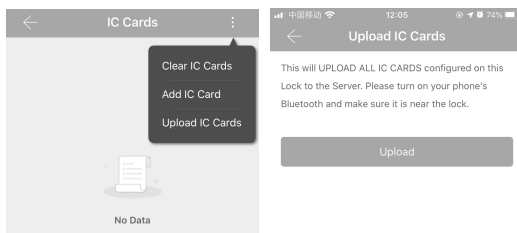
Under the mobile APP, you can find the added passcodes, you can edit any passcode and click Delete button to delete the passcode.



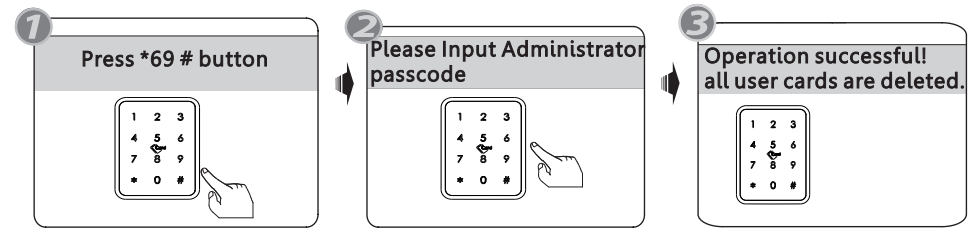
8.Enroll User Card



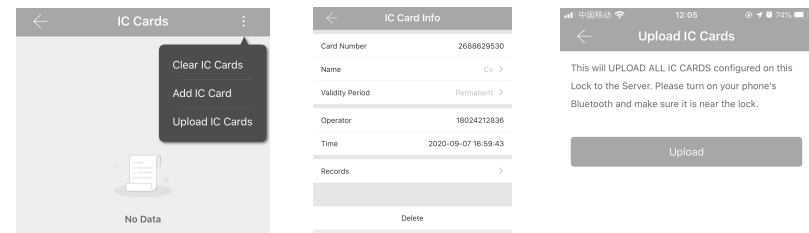
Under the mobile APP, you can upload the added cards to the lock and server.



9.Delete User Card

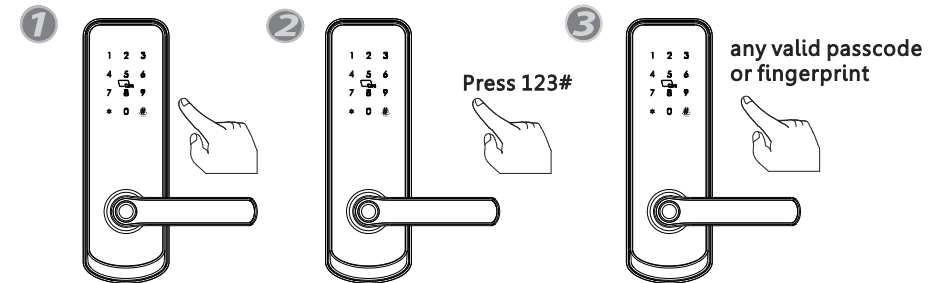


Under the mobile APP, you can find the added IC Cards, you can edit any username and click Delete button to delete the card, also you can choose upload IC Cards to ensure the card is deleted in the server.



10.Passage Mode

Unlock the door with any valid passcode or fingerprint.
Press 123# button during the time of unlocking.
Sound tip: the lock set to passage mode
Then the lock is under always open state, you can enter any valid passcode or fingerprint to cancel this function.



11.Unlock Records

You can find the unlock records for the passcode/IC Card/Fingerprint etc.
More details, you can refer the manual of our TTLOCK App operation steps.

